

## Duraglaze® Dinky Durham PhotoMug

The Duraglaze® Dinky Durham PhotoMug is a mini version of the popular Duraglaze® Durham PhotoMug, with photo quality print giving stunning visual results of your image. We offer an exclusive collection of patent protected Duraglaze® PhotoMugs, which have been independently tested to BS EN 12875-4 confirmed 100% dishwasher proof; they simply will not fade staying bright and vibrant for the lifetime of the mug. Furthermore, the Duraglaze® PhotoMugs come in various body styles which are printed in full colour by dye sublimation, some of them right from top to bottom, for photo quality print unobtainable by any other means. Our Duraglaze® Dinky Durham PhotoMug offers exceptional value for money and is an absolute bestselling promotional product.



### Key Product Information

Product Code:	12190
Commodity Code:	69120023
MOQ:	72
Size:	See Artwork Requirements
Branding Area:	82 x 190mm
Branding Method:	Dye Sublimation
Material:	Stoneware mug
Made In:	UK
PDF Proof:	24-48 Hours
Express Service Available:	48 Hour
Printed Proof Leadtime:	3 Working days
Leadtime:	5 Working days from proof approval
Colour:	White
Weight:	207g
Capacity:	7oz / 185ml

### Packaging and Other Information

No Per Carton:	72
Packaging Details:	714 x 486 x 349mm
Carton Weight:	23Kg
Standard Packaging:	MugSafe® Packaging
Alternative Packaging:	MugSafe® Solo

### Recommendations and Limitations

Please wash mug before use.

The mug base can also be printed in 1 colour, extra charges apply.

Ideal For: Trade Exhibitions, Cafés / Coffee Bars, Corporate Giveaways, Desktop Promotions

## Duraglaze® Dinky Durham PhotoMug

Sizes available: Approximate dimensions 82mm tall x 73mm diameter. Please note mugs may vary slightly in size and these details should be used for guidance only.

We can accept artwork by disk, email or you can upload onto our FTP site. Please contact us for details.

Programs:

Mac: QuarkXpress 7, Illustrator, PhotoShop, and Adobe In Design.

PC: PhotoShop and Adobe InDesign

Please supply us with:

- Finished version of the artwork.
  - All of the source files used to create the finished version, including all high resolution scans, all screen and printer fonts
- Label the disk with job title and return address.

All artwork supplied must be fully editable. The finished version should be supplied as a CYMK file (plus spot colour separations.)

Please note text must be no smaller than 8pt (15pt for etched mugs) and reversed out text should be larger and in bold.

Emailed artwork must be clearly labelled with your order number and company name in the reference line, or supplied on CD with the same information clearly marked. 4 colour process artwork needs to be 300dpi or higher.

Supply a print out:

Black and white or from a low-cost colour printer using the right file, not an earlier version. Label with PMS references for all corporate colours or other critical colour matches. Supply colour samples or swatches at the outset. Customer supplied printouts cannot be matched because there is no consistency of calibration between their machine and our press.

For Screen Printed designs please supply the following:

- Editable EPS file
- Image saved at 100% size or larger
- Pantone® references supplied for colours
- Fonts supplied or text saved as curves

Dye sublimation printed designs need a 2mm bleed and live matter must be 10mm from the edge of the mug, to ensure a crisp print quality.

If you would like further information regarding a specific design, please feel free to contact us

QR Codes - Please note that the print process and substrates used in the production of this item may not always allow QR codes, if present on your artwork, to function correctly. When approving your proof, you are accepting that this may be the case and as such accept full liability for any malfunction of the QR code.

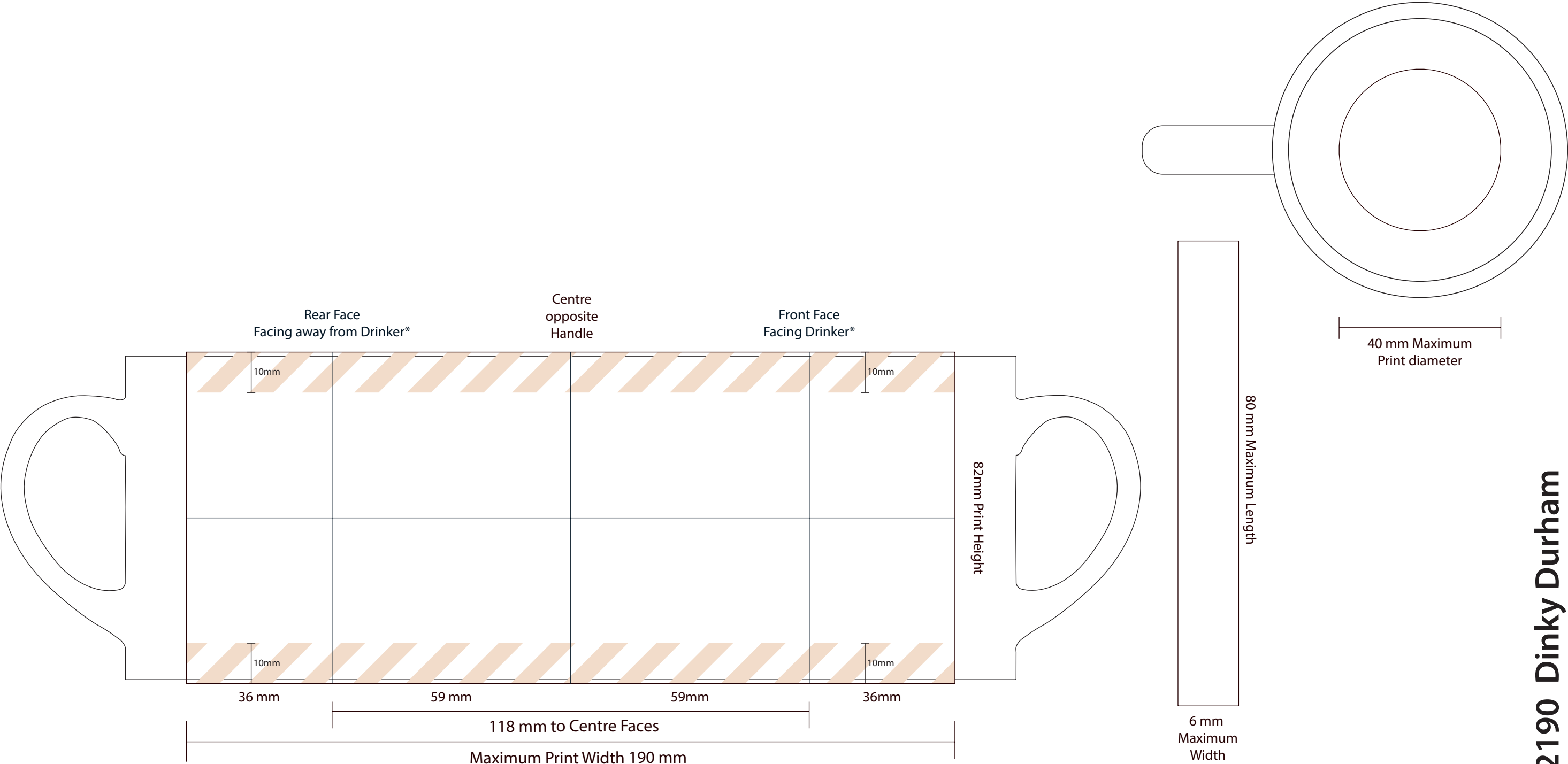
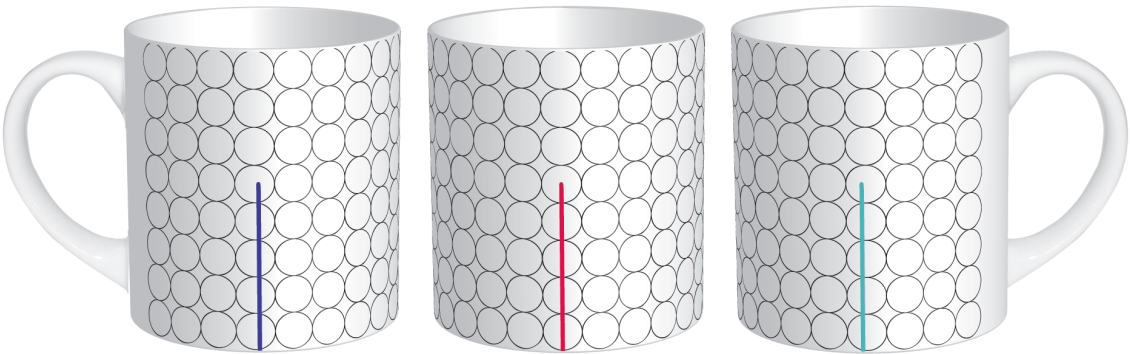
See the following page(s) for the artwork templates for this product.

All information correct at time of publication. Whilst we endeavour to maintain the accuracy of this document, details may

change without notice.

Visual representation only, colour and position may differ on final product.

Job Information		Print Information	Artwork Advisory
Job No:	435444	Process:	Dyesublimation
Description:	Sample	Dimensions:	190 x 82mm
Product:	Dinky Durham	Colour(s):	CMYK
Colour:	White		
Proof No:	15		
Date:	06/05/2016		
Repro:	AE		
			All dimensions are +/- manufacturing tolerances
			*Faces indicate a right hand drinker,
			Screen printed detail must be at least 1pt (0.353mm) thick
			Text should be minimum 8pt to remain legible. Light text on a dark background will reproduce better if bold
			Please avoid placing critical matter (text, Logos, Borders) within these areas



Due to variations beyond our control and the nature of the print process the colour on the pdf may differ from that on the final product.